



CIVIL SCOPE
EARTHWORKS

Capability Statement

For all enquiries please contact
sales@civilscopeearthworks.com.au

www.civilscopeearthworks.com.au

Who We Are

Our project teams and operators are highly experienced and capable. Our subcontractor selection process is rigorous and we pride ourselves on delivering outstanding customer service and excellence in productivity and results.

Our focus is on delivering the highest quality of industrial demolition, excavation and earthworks in NSW. With a highly trained team of restricted Demolition Supervisors, operators and labourers, our team has always maintained the most current up to date safety training. With the “Safely motivated” philosophy the Civil Scope Earthworks team understands the importance of completing projects safely and to the highest possible standards.

Safety

Safety is our No.1 Priority in all our Projects

Civil Scope Earthwork's safety record stands at zero serious injuries in 10 years. Quite an achievement!

Safety Procedures

Our teams including site managers, foremen, labourers and operators are all empowered to analyse all individual site circumstances and conditions at the inception of our projects.

A team meeting is then undertaken, all members contribute to a safety analysis process. A safety committee is appointed, the hierarchy of controls is engaged, a thorough site safety mission is undertaken, and the placement of controls is implemented.

After a thorough inspection & audit, work details are assigned and SWMS and risks assessments are talked through and signed. All documents are double checked, finalised and forwarded onto project managers and clients. A final “**Commitment to Safety Briefing**” is held and project tasking can then commence.

Throughout the project, daily toolbox talks and safety briefings are conducted. SWIMS and risk assessment amendments are carried out as site conditions develop.

**At Civil Scope Earthworks,
we are safely motivated.**

**CIVIL SCOPE
EARTHWORKS**



Our Services

At Civil Scope Earthworks we undertake all types of excavation, demolition & earthmoving projects.

From service trenches and clearing to bulk excavation, and final trim, we cover all facets of civil construction & demolition.

Civil Scope Earthworks' subcontractors have a variety of skill sets and we are proud to show a record of successful alliance and projects that we have delivered on time and on budget.

Clients and Projects

Civil Scope Earthworks Excavations has been part of smaller residential domestic projects including apartments and townhouses, and on medium to large construction projects.

Client	Project / Location
Apex Mendri	Apartment Complex, Crows Nest
Meridian Constructions	Campbelltown Catholic Club
Richard Crookes	Bayside Apartment, Botany
Freyssinet	Sydney Water, South Camden
Colemans Group	Various Demolition and Excavation / Prepare Subgrade for Pavement
Liverpool Council	Works Division
South West Builders	Pymble and Killara
NSF Electric	Clairmont Meadows Public School
Rainbow Group	Star City Casino
Diona Civil	Northern Road Londonderry
QC Project Management	Various residential locations
Ozlect	Rosemeadow Catholic School
Defence Electrical	Excavate and Install HV Electrical Conduits and Pits
Integrated Environmental	Various Hazardous Waste Remediation Demolition / Excavation
B2B Projects	Driveway and Carpark Construction / Suspended Slab Bridge Approaches
Dragonfly Environmental	Sediment Basin Remediation Contaminated Waste Removal / Earthworks

At Civil Scope Earthworks, we specialises in excavation, demolition & earthmoving.



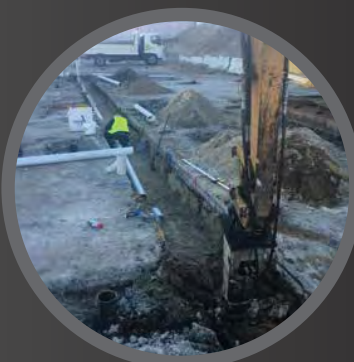
Recent Projects

As a demonstration of our capability to undertake the works as described Civil Scope Earthworks can provide this statement of relevant experience.

In the recent past we have completed the safe demolition & safe removal of some 25-30 structures & various building types including residential, commercial & industrial types of various construction materials up to 15m in height.

Some of our other projects include a number of public amenities buildings for Wollondilly Council. They consisted of mostly brick, concrete and steel. Some asbestos was encountered & as per Civil Scope Earthworks policy an asbestos register was raised. The asbestos was legally removed & disposed of by licensed asbestos contractors. After hazardous materials clearance certificates were issued the demolition continued.

Other examples of relevant demolition experience include the dismantling of a horse stabling complex and several large and substantial rural storage sheds. They consisted of steel girder columns and rafters with concrete footings and steel sheet cladding. Some of the steel girder rafters required the use of a 40-tonne mobile crane and elevated work platforms to safely deliver the sections to ground level for further dismantling.



**At Civil Scope Earthworks,
we are experienced.**

**CIVIL SCOPE
EARTHWORKS**

Plant and Equipment

A snapshot of our well maintained and modern equipment includes:

Equipment	Attachments
⦿ Caterpillar 320GC 20 Tonne Excavator 2017	Genesis XT Demolition Shears Epiroc CB950 Concrete buster Epiroc BP2050 Hydraulic Pulveriser
⦿ Komatsu 14 Tonne PC138 Excavator 2012	Hammer - Atlas Copco RB120 Silenced Komatsu Tilt Bucket Mud Bucket and GP Bucket Deep Drilling Rock Auger (up to 5m depth)
⦿ Caterpillar 5 Tonne 304CCR Excavator 2009	Hammer Atlas Copco RB202 Auger Drive Drill master AA-3G Assorted Augers - 200, 250, 350, 400, 450 & 600 Hydraulic Grabs Sifting Bucket GP Buckets
⦿ Caterpillar 259D Positrak 2017	Caterpillar Forestry Mulcher HM115C 4 in 1 Bucket Pallet Fork

Quality

We understand the importance of producing quality outcomes for clients.

Our quality objective is to meet or exceed client requirements and expectations in a proactive, professional and cost-effective manner.

We have developed and implemented a Quality Management System that allows our organisation to document and improve our practices in order to better satisfy the needs and expectations of our clients, stakeholders and other interested parties.

All demolition complies with AUS/NZ 2601-2001
All Earthworks & excavations comply with AUS/NZ 3798-2007



Allied
EARTHMOVERS

At Civil Scope Earthworks,
we produce quality outcomes.





Workplace Health and Safety

Civil Scope Earthworks is committed to providing and maintaining a safe and healthy workplace and to operate within a safety culture that ensures all staff know they are valued and understand their role in maintaining health and safety in the workplace.

Our workplace Health and Safety Management System outlines general health and safety rules, responsibilities of personnel, related policies and procedures including first aid, drug and alcohol and other WHS information applicable to all employees and contractors.

Our WHS Site safety management plan complies with AS/NS 4801-2001.

Environmental Management

Our Construction Environmental Management Plan highlights that all personnel has a base level duty of care to prevent environmental harm as described in the Environmental Protection Act 1986.

Civil Scope Earthworks undertakes training & awareness competency regularly. All our team members are entrusted to comply with environment & heritage risk management.

Construction & Demolition Environmental Risk Management Plans are in place at all our projects. They address all individual site specific conditions.

**At Civil Scope Earthworks,
we prevent environmental harm.**

**CIVIL SCOPE
EARTHWORKS**

Key Personnel

Robert May

Director at Civil Scope Earthworks
Site Manager / Site Supervisor

Rob has over 30 years experience in the Construction Industry

✦ Construction Induction	CGI0148282SEQ01
✦ Cert I in Construction	4 units
✦ Cert II in Construction Cert III in Construction	10 units
✦ Cert III in Civil Construction Plant Operations	25 units
✦ Business Management Diploma	8 modules
✦ Demolition Supervisor	19 units
✦ Asbestos Awareness	10675 NAT
✦ Restricted Demolition License	AD 213437
✦ First Aid Certificate	2019-24698

Sejuti Paul

Project Engineer

Sejuti has 7 years in the Engineering/Construction Industry, including experience in various areas (Technical Engineering, Safety, and Quality)

✦ Bachelor of Civil Engineering	UTS
✦ Diploma in Engineering Practice	UTS
✦ Diploma in Project Management	Careers Australia
✦ Construction Induction	CGI0341548SEQ02

Anita Ryall

Office Administrator

Anita has 20 years experience in Senior Contacts Administration

✦ Sydney Light Rail	
✦ Parramatta Light Rail	
✦ Transport for NSW	
✦ Construction Induction	CGI01390910SEQ1



At Civil Scope Earthworks,
we have an experienced and dedicated team.





CIVIL SCOPE EARTHWORKS

Business and Administration Information

Business Name:

Civil Scope Earthworks

Phone:

0432 506 741

Email:

sales@civilscopeearthworks.com.au

Location:

St Andrews, New South Wales
Australia 2566

ABN: 87 151 040 381

Lic No: 344675C

Demolition Licence: AD213437

Visit our website

www.civilscopeearthworks.com.au

CIVIL SCOPE
EARTHWORKS